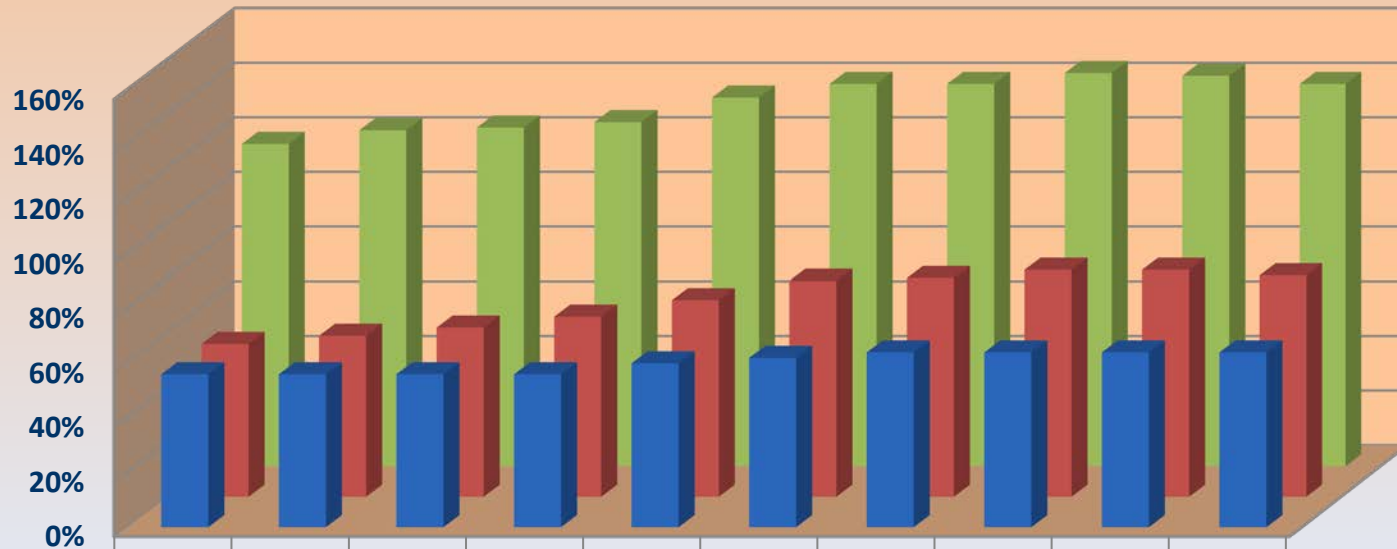




ILLINOIS

UNIVERSITY OF ILLINOIS AT URBANA-CHAMPAIGN

Tuition Remission Assessed Rates Compared To Actual and Base Waiver Rates *Historical Trend By Fiscal Year*



	2008	2009	2010	2011	2012	2013	2014	2015	2016	2017
■ Assessed Rate	56%	56%	56%	56%	60%	62%	64%	64%	64%	64%
■ Base Waiver Rate	56%	59%	62%	66%	72%	79%	80%	83%	83%	81%
■ Full Cost Actual Rate	118%	123%	124%	126%	135%	140%	140%	144%	143%	140%

*Rate development, basis, and final assessed rate is reviewed and approved by UIUC administration.
FY2017 rates were negotiated for a one year rate period based on FY2015 costs.*

***Produced By: Office of Government Costing
Date: October 19, 2016***